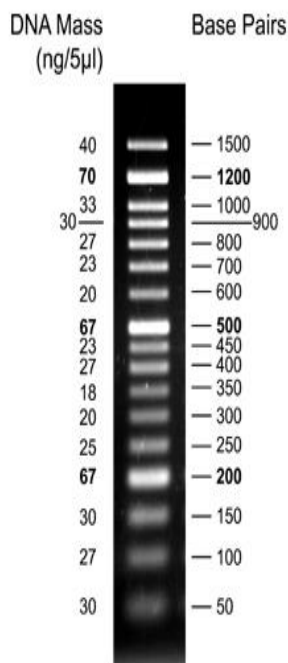




50 bp DNA Ladder ready-to use



2% TAE agarose gel

Features: A unique combination of PCR products and a number of proprietary plasmids digested with appropriate restriction enzymes to yield 17 fragments, suitable for use as molecular weight standards for agarose gel electrophoresis. The DNA includes fragments ranging from 50-1,500 base pairs. The 200 and 500 base pair bands have increased intensity to serve as reference points. The approximate mass of DNA in each band is provided (0.5 µg a load) for approximating the mass of DNA in comparably intense samples of similar size.

Preparation: PCR products and double-stranded DNA digested with appropriate restriction enzymes, are phenol extracted and equilibrated to 10 mM Tris-HCl (pH 8.0) and 1mM EDTA.

Usage: 5 µl/lane

Concentration: 0,1 µg/µl

Tracking Dye: Ready-to-use with Orange G as tracking dye

Number of bands: 17 fragments

Loading: 0.5 - max. 0.8 µg / lane in a 1.7 - 2.5 % agarose gel

Transportation: Shipped on blue ice or room temperature

Storage: at -20°C for 24 months

Ordering information:

Cat.-no	Description	Amount
300003	50 bp DNA Ladder (ready-to use)	50 µg/500µl
300004	50 bp DNA Ladder (ready-to use)	5 x 50 µg

.. a good decision ..

GeneON .. a good decision ..

Contact Phone +49-(0)-621- 5720 864 Fax: +49-(0)-621-5724 462

E-Mail: <mailto:info@geneon.net> WEB: <http://www.GeneOn.net> Version: 25.10.2009 AS

Unless specified otherwise, all products of GeneON are sold for research use only.